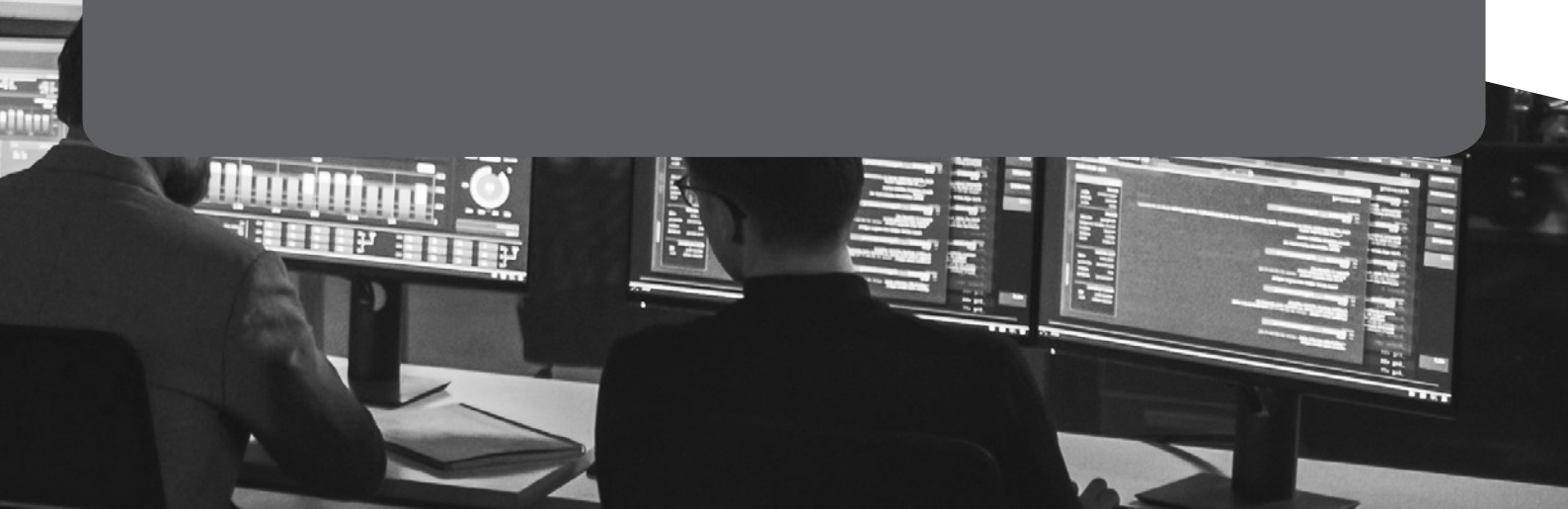


geratech<sup>®</sup>



**VWX-VW18-46**

Video Wall





## Video Wall

Visualwall LCD products are meticulously crafted to transform the world of video wall applications. At Visualwall, we're dedicated to creating captivating visual experiences that leave a lasting impact. Our featured range of LCD displays redefines the art of storytelling, combining innovation, precision, and flexibility to deliver stunning video walls that capture attention and inspire imagination.

Central to the effectiveness of these video walls are the types of LCD tiles used, namely UNB (Ultra Narrow Bezel), ENB (Extreme Narrow Bezel), and RNB (Razor Narrow Bezel).

Explore the future of dynamic LCD video walls with Visualwall, where clarity, creativity, and engagement converge to set new standards in visual communication.

They are widely used in security monitoring rooms, and commercial display. Lcds cover 3.5, 1.8, and 0.88mm, from low to high end assemblies. Product sizes cover 46, 49, and 55 inches.



Security Monitoring



Commercial Exhibition

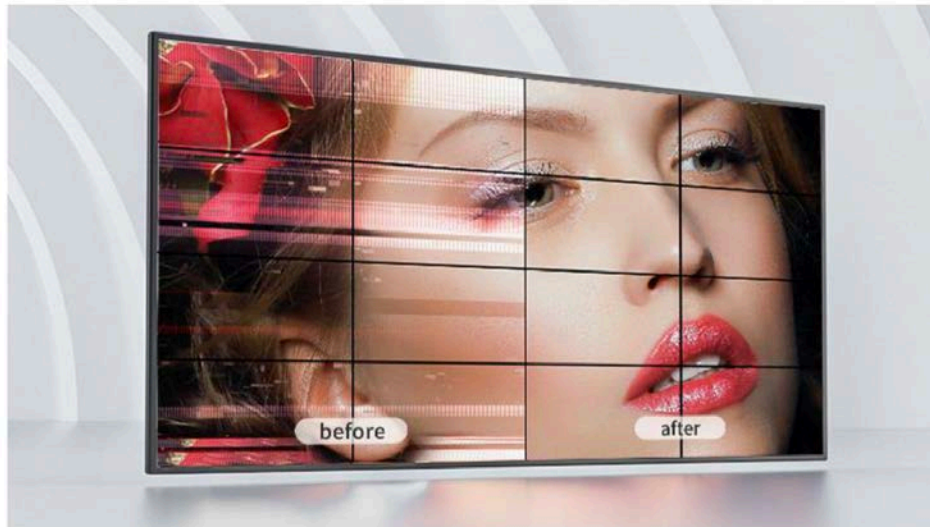
## Technical Specs

Part Number	VWX-VW18-46
Size	46
Resolution	1920*1080
Brightness (nit)	500
Interface	LVDS
Bezel	1.7mm
Op Temp	-5-50
Color Gamut (%NTSC)	72
Contrast Ratio	1200:1
Color Depth	16.7M
LED Lifetime (Hrs)	50K
Viewing Angle (U/D/L/R)	89/89/89/89
Outline Dimensions (mm)	1021.2*575.8



- **High grayscale in lower brightness**

Under low brightness, the grayscale of the display screen is almost perfect, and the layering and brightness of the pictures are better than those of the traditional display screen. More image details are shown without any information loss.



- **Point-by-point correction**

Each out-of-control pixel can be perfectly corrected. It is perfectly adapted to the human eyes' perception of color, and truly restores the color of the nature.



• High refresh rate

3840Hz ultra-high refresh rate, 120Hz frame-change frequency, for stable pictures without ripples, clear image edges, and accurate and true image restoration.



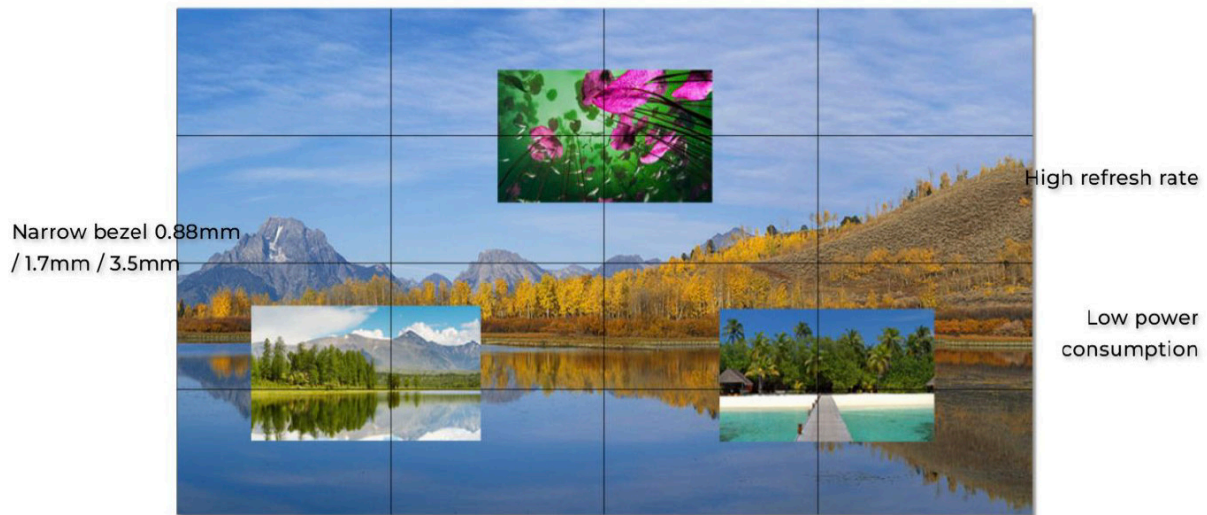
• Energy saving and environmental protection

High efficiency light-emitting chips and energy-saving driver ICs are used to solve the peak energy consumption fundamentally. Real-time and dynamic power consumption technology can reduce energy consumption.

B-B/mm	3.5		1.7	0.88
Size	65/75	46/49/55	46/55	46/55
Resolution	3840*2160	1920*1080	1920*1080	1920*1080
Brightness/nits	500/700		500/700	500/700



Part Number	Size	Resolution	Brightness (nit)	Interface	Bezel
VWX-VW35-46	46	1920*1080	500	LVDS	3.5mm
VWX-VW35-49	49	1920*1080	500	LVDS	3.5mm
VWX-VW35-55	55	1920*1080	500	LVDS	3.5mm
VWX-VW18-46	46	1920*1080	500	LVDS	1.8mm
VWX-VW18-55	55	1920*1080	800	LVDS	1.8mm
VWX-VW08-46	46	1920*1080	500	LVDS	0.8mm
VWX-VW08-55	55	1920*1080	500	LVDS	0.8mm





[www.egerate.com](http://www.egerate.com)

[www.geratech.eu](http://www.geratech.eu)